

E. Rivers Elementary School

GO Team Meeting

April 25, 2024

Agenda

- I. Call to Order**
- II. Roll Call; Establish Quorum**
- III. Action Items**
 - a. Approval of Agenda
 - b. Approval of Previous Minutes:
- IV. Discussion Items**
 - a. 2024 Spring MAPS results
 - b. Needs Assessment
- V. Information Items**
 - a. APS Facility Utilization Planning
 - b. Cluster Advisory Team Report
 - c. GO Team Elections
- VI. Announcements**
- VII. Public Comment**
- VIII. Adjournment**



2024 Spring MAPS Results

Data Points to Consider

- **Spring Results**
- **Fall to Spring Comparison**
 - Literacy
 - Numeracy



Needs Assessment: Guiding Questions

What does this data tell us?

What good news is there to celebrate?

Where are growth opportunities?

What trends do we see in the data?

Needs Assessment

ACTIVITY

Needs Assessment

During this Needs Assessment, we will look at data from the Spring MAPS administration and identify 2-3 potential needs for the 2024-2025 school year.

This discussion will help school leadership as they complete the school's 2024-2025 Continuous Improvement Plan.

MAP Reading

MAP Growth Achievement Level Predictions by School

Georgia Milestones Achievement Level Predictions are only made for Grades 2-8

(*Reading tests taken in Spanish are not given a GAMAS Achievement Level)

click in a school or district row to see grade level performance if there are above 10 students per grade

Data updates
nightly
during test
window.



School	Window	Exams				
DISTRICT	Fall 2023-2024	17,974	37%	28%	23%	12%
	Spring 2023-2024	16,188	38%	26%	23%	13%
	Winter 2023-2024	18,105	38%	28%	22%	12%

School	Window	Exams				
E Rivers	Fall 2023-2024	435	24%	23%	32%	22%
	Spring 2023-2024	442	24%	26%	27%	22%
	Winter 2023-2024	446	24%	28%	27%	20%

MAP Reading

School	Grade	Window	Exams				
E Rivers	02	Fall 2023-2024	101	27%	23%	30%	21%
		Winter 2023-2024	105	21%	27%	31%	21%
		Spring 2023-2024	97	23%	28%	25%	25%
	03	Fall 2023-2024	105	23%	23%	32%	22%
		Winter 2023-2024	112	23%	34%	21%	21%
		Spring 2023-2024	112	23%	23%	29%	24%
	04	Fall 2023-2024	119	21%	24%	27%	28%
		Winter 2023-2024	120	25%	26%	25%	24%
		Spring 2023-2024	122	25%	23%	30%	22%
	05	Fall 2023-2024	110	25%	21%	38%	16%
		Winter 2023-2024	109	28%	28%	31%	14%
		Spring 2023-2024	111	25%	32%	25%	18%

MAP Reading Growth Targets



E Rivers	Fall to Spring (same school year)	592	46%	6%	48%
----------	-----------------------------------	-----	-----	----	-----

School		Growth Timeframe	Grade	Exams		
E Rivers		Fall to Spring (same school year)	KK	88	31%	67%
			01	99	44%	46%
			02	90	43%	52%
			03	99	44%	48%
			04	114	52%	44%
			05	102	58%	34%

MAP Math Achievement

MAP Growth Achievement Level Predictions by School

Georgia Milestones Achievement Level Predictions are only made for Grades 2-8

(*Reading tests taken in Spanish are not given a GAMAS Achievement Level)

click in a school or district row to see grade level performance if there are above 10 students per grade

Data updates
nightly
during test
window.



School	Window	Exams				
DISTRICT	Fall 2023-2024	17,915	35%	37%	20%	9%
	Spring 2023-2024	15,942	39%	34%	18%	9%
	Winter 2023-2024	18,009	36%	35%	20%	8%

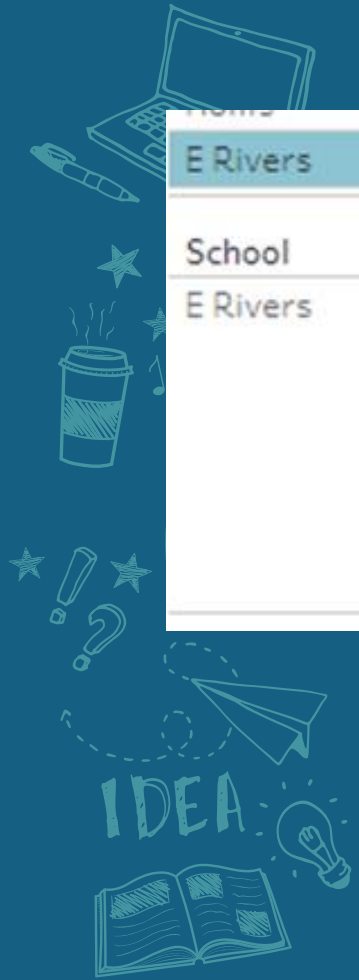
School	Window	Exams				
E Rivers	Fall 2023-2024	437	19%	34%	32%	15%
	Spring 2023-2024	442	20%	38%	30%	12%
	Winter 2023-2024	446	19%	36%	33%	12%

MAP Math Achievement

School	Grade	Window	Exams				
E Rivers	02	Fall 2023-2024	101	16%	40%	32%	13%
		Winter 2023-2024	105	14%	40%	34%	11%
		Spring 2023-2024	97	15%	42%	26%	16%
	03	Fall 2023-2024	105	20%	24%	37%	19%
		Winter 2023-2024	112	21%	26%	40%	13%
		Spring 2023-2024	110	13%	35%	38%	14%
	04	Fall 2023-2024	120	18%	35%	34%	13%
		Winter 2023-2024	120	18%	34%	38%	10%
		Spring 2023-2024	123	25%	30%	36%	9%
	05	Fall 2023-2024	111	23%	39%	23%	14%
		Winter 2023-2024	109	23%	44%	18%	15%
		Spring 2023-2024	112	26%	44%	20%	11%

IDEA

MAP Math Growth Targets



E Rivers		Fall to Spring (same school year)	588	49%	47%
School		Growth Timeframe	Grade	Exams	
E Rivers		Fall to Spring (same school year)	KK	85	32% 64%
			01	99	44% 5% 51%
			02	90	47% 51%
			03	96	41% 6% 53%
			04	115	59% 39%
			05	103	66% 5% 29%

Needs Assessment:

What are two to three (2-3) needs we can identify based our data?

	Need
1	
2	
3	





Information Items



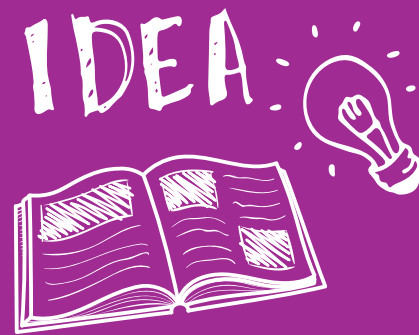
• Enrollment and School Facility Utilization Report 2023-24SY

- <https://tinyurl.com/dmn5bx9s>

Additional Information Items

- **Cluster Advisory Team Report**
- **GO Team Elections**
 - Find candidates at apsstrongschools.com
 - Vote **APRIL 16-25**
 - Households are sent a unique link based upon information in Infinite Campus
 - School Staff will be sent a link to their APS email address

Announcements



- **GO Team Members**
 - Complete your end of year surveys
 - Principal Feedback Survey (**AVAILABLE NOW!** Check your email for the link)
 - GO Team Satisfaction Survey (**Available May 1st**)
- Complete your required trainings **ASAP**
 - Contact the GO Team Office with any questions



*Thank
You*

for yet another
great year!

